

SPA-29.5x-D

Dual Polarization Broadband Parabolic Antenna

Key Features :

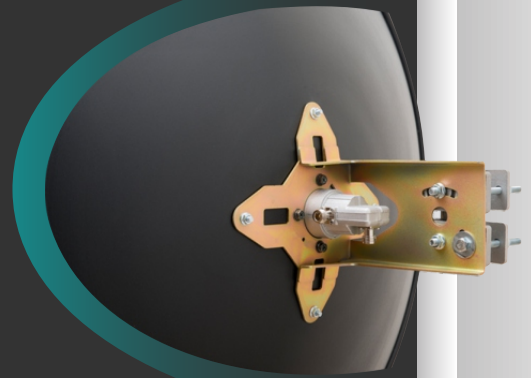
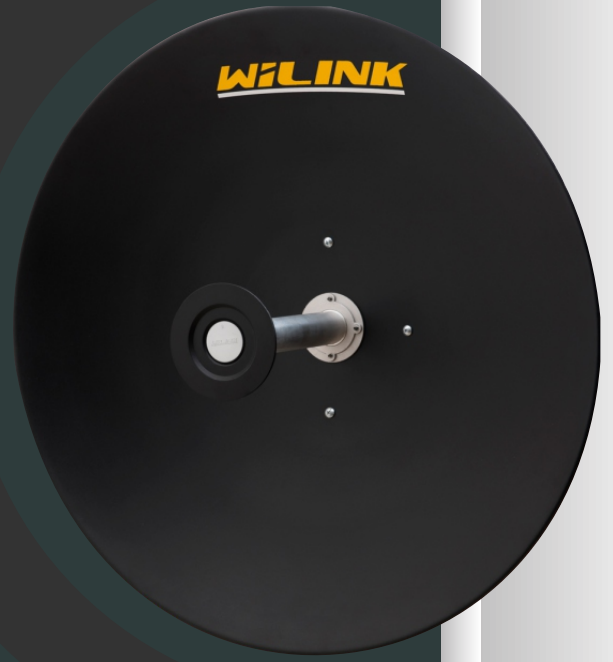
- Light weight
- Robust Structure
- Easy Installation
- Precise alignment

Applications :

- Commercial and military applications
- Point-to-point and point-to-multipoint topologies

Description :

WiLINK is a leading broadband antenna brand manufactured by Pionaria Ltd. for telecom, industrial and military applications with an emphasis on the 5GHz ISM band. Since their introduction in 2006, WiLINK antennas have undergone a continuous optimization process by a dedicated R&D team of highly qualified and experienced experts resulting in the production of a wide range of standard and high performance broadband antennas with best-in-class electromagnetic parameters.



SPA-29.5x-D

Dual Polarization Broadband Parabolic Antenna

Electromagnetic Parameters	
Frequency Range	4.8-6.2 GHz
Gain	29.6dBi
Polarization	Linear (V&H)
3db Beamwidth	5.2°
XPD	30 dB
F/B Ratio	40 dB
Port-To-Port Isolation	40 dB
VSWR	1.4:1
Impedance	50 Ω
Maximum Input Power	100 W
Connector Type	N-Female

Mechanical Parameters	
Diameter	66 cm
Weight	4.2 kg
Shipping Dim. (L x W x H) tow antennas	70 x 70 x 21 cm ³ 40.5 x 40.5 x 23.5 cm ³
Wind Load	200 km/h
Dish Material	Aluminium Alloy